

Programmable Thermostat

Let's develop a simple application, a programmable thermostat. The front panel will be used as a user interface. Let's define some design rules.

1. Four modes of operation for the front panel
 - MODE 1: Display current temperature.
 - MODE 2: Display current time.
 - MODE 3: Set temperature range of operation (low, high).
 - MODE 4: Set time range of operation (start, end).
2. Heat pump will turn ON, if the current time is within the range of operation and if the current temperature is within the temperature range.
3. MODE button will scroll through the different modes.
4. ENTER button will select between high and low temperatures and start and end times.
5. PB4, PB3, PB2 and PB1 will change the values of time and temperature only when in set mode.

Figure 1 shows the hardware schematic for the programmable thermostat. A 10K Ω thermistor will be used to measure temperature. The external heat pump requires a 24 VDC input, which will be triggered by output Y8 of the IP3416.

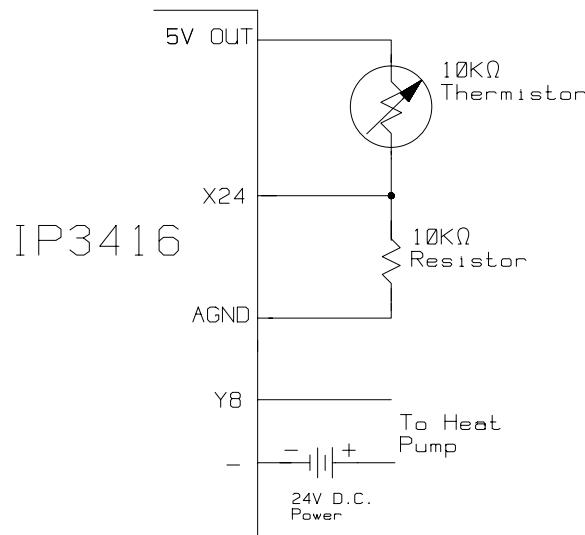


Figure 1. Hardware design of programmable thermostat

The first thing to develop will be the operator interface. The front panel of the IP3416 will be used for this purpose. The MODE button will scroll through the four modes of operation. Let's define these and the corresponding internal relays,

MODE	DESCRIPTION	RELAY
1	Display current temperature.	R0
2	Set low & high temperature.	R1
3	Display current time	R2
4	Set start & stop time	R3


```

30|-----[C13/60]---|greater than or equal to 60
|
|          C13
31|-----[D1]-----|
|          C0
32|-----[C14/60]---|
|          C14
33|-----[D1]-----|
|
|  R3      R37      R9      C23      Change start time hours
34|-| |-----| |-----|/|-----[C23+1]---|
|
|          R9      C24      Change end time hours
35|          \-----| |-----[C24+1]---|
|
|  R3      R38      R9      C23      Change start time hours
36|-| |-----| |-----|/|-----[C23+10]--|
|
|          R9      C24      Change end time hours
37|          \-----| |-----[C24+10]--|
|
|          C0      Make sure not > 24
38|-----[C23/24]---|
|
|          C23
39|-----[D1]-----|
|
|          C0      Make sure not > 24
40|-----[C24/24]---|
|
|          C24
41|-----[D1]-----|

```

Now we need a way of informing the user what mode we are in. We will use the three mode LED's of the IP3416 (I/O, time and mode).

```

|          I/O L
|  R0          R206      TEMPERATURE indicator light
42|-| |-----|-----| ( )-----|
|
|  R1
43|-| |-----|
|
|  I/O L      TIME
|  R206      R204      TIME indicator light
44|-|/|-----|-----| ( )-----|
|
|  R1          PROG
|          R203      SET indicator light
45|-| |-----|-----| ( )-----|
|
|  R3
46|-| |-----|
|
|  TIME      COLON
|  R204      R205      TIME mode, so light-up colon
47|-| |-----|-----| ( )-----|

```

This completes the user interface. The next thing that needs to be done is to measure and calculate the current temperature.

```

|          CALCULATE CURRENT TEMP
|          C0
48|-----[A24]-----|calculate current temperature
|
|          C31      by using a spline approximation
|          of the curve generated by the

```

```

49|-----[1361-C0/7] thermistor
|
|          C30      | f(x)=(9939-(1361-x)/7*x/14)/61
50|-----[C0/14]----|          *x/10 - 38
|
|          C29      | where, x = A24
51|-----[C31*C30]-|
|
|          C28      |
52|-----[9939-C29/61]--|
|
|          C8        |
53|-----[C0/10*C28/73-38]----| C8 is in degrees Celsius
|Overf
| R31          C8    | If negative, light up upper
54|-| |-----[20000-C8]| green LED to indicate negative

```

We have the current temperature. Now the logic to control when the heat pump is turned on has to be generated. The heat pump should be ON when the current time is between start and end time and the current temperature is less then low temperature. The heat pump should turn off when we are not within the time range and when the current temperature is greater than the high temperature setting. The following RLL will do this,

```

|
|          C7        | Calculate the current time
55|-----[D35*100+D34]--| HHMM
|
|          C3        | Calculate start time
56|-----[C23*100+C13]--| HHMM
|
|          C4        | Calculate end time
57|-----[C24*100+C14]--| HHMM
|
|          C0        | Start time <= current time?
58|-----[C7-C3]----|
|Overf
| R31          C0    | Start time > end time?
59|-|/|+-----[C7-C4]----|
|
|          |Overf
|          | R31      | R17 means C3 <= C7 < C4
60|          `--| |----- ( )-----|
|
|          C0        |
61|-----[C8-C6]----| Turn on heater if current time
|          Overf      | is between start and end times
| R17   R31          | R11      | and if current temperature is
62|-| |---| |----- (S)-----| between low and high temperature.
|
|          C31      |
63|-----[20000-C8]|
|Overf
| R31          C31   |
64|-| |-----[0]-----|
|
|-----|
|
|          C0        | Stop the heater when temp. is
66|-----[C8-5-C6]-| 5 degrees more than the high
|          Overf      | temperature
| R17   R31          | R11      |
67|-| |---|/|----- (R)-----|
|
| R11          Y8    |
68|-| |----- ( )-----|

```

The final step in our program is to display the time or temperature depending on the mode we are in. The following does this,

```

| R0
69|-|-----[C8]-----|Display current temperature
| R2
70|-|-----[C7]-----|Display the current time
| R3          R9
71|-|-----+|/|-----[C3+10000]|Display low time
|          | R9
72|          `|-----[C4+20000]|Display high time
| R1          R8
73|-|-----+|/|-----[C5+10000]|Display low cutoff
|          | R8
74|          `|-----[C6+20000]|Display high cutoff

```

The final step of this design is to design our own label for the programmable thermostat as shown in Figure 2. International Parallel will provide private labels at a nominal charge.

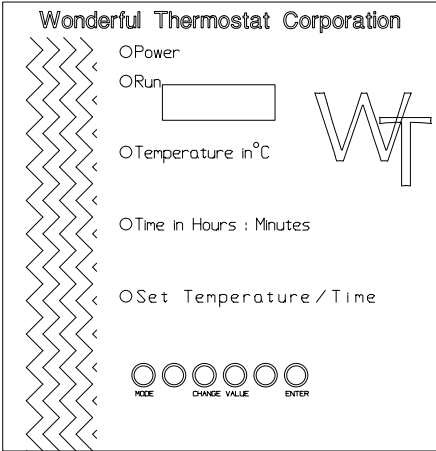


Figure 2. Private label for thermostat